

Ultralight Designs

Blue-Torch & Blue-Mini Stove Instructions

Fuel: This stove ONLY works on alcohol (see warning below). I recommend Denatured alcohol which is available at most hardware stores. While out in the field HEET Gas-Line Antifreeze in the yellow bottle is available at gas stations. Grain alcohol (Everclear from the liquor store) and Rubbing alcohol are poor choices. Very poor performance and lots of black soot. Avoid if possible.

Tips: When filling your fuel bottle add a couple of drops of red food coloring. This alerts you that this is alcohol, not water or other clear liquid. It also allows you to see it in case of spills. Before you use this stove out in the field, test it at home in the backyard. Become familiar with how it operates, how to center your cooking pot and how to arrange the windscreen.

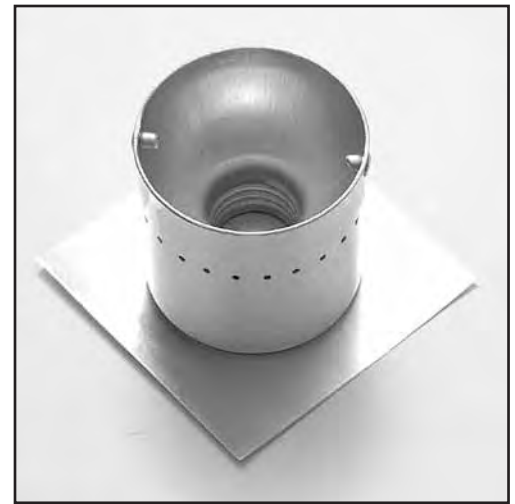
Filling the stove: First find a flat level area to place stove. Remove all flammable material (leaves, grass, twigs, etc.) for about 1 ft. all around. Place the small square aluminum heat reflector on the ground and center stove on reflector. Pour approx. 1 oz of alcohol into the center of the stove. Add 5-6 drops of alcohol onto the heat reflector/priming pan. Try to keep the priming alcohol near the base of the stove.

Tip: Do not fill the stove if it is HOT. If you can't touch the stove don't put alcohol in it. Wait until it cools down before refilling. In bright light the flame is difficult if not impossible to see. Use caution to avoid burns.

Lighting the stove: At this point have everything ready (the pot and the windscreen). Light the center of the stove first and then light the alcohol on the heat reflector/priming pan. The stove will flare up a bit as the alcohol in the stove and on the heat reflector ignite. As the stove heats up and the alcohol in the stove begins to boil, it will vaporize and be forced out of the holes around the outside of the stove. Do not put your pot on the stove until the stove is FULLY primed and you see those blue jets coming out of the side of the stove. At this point go ahead and lower your cook pot onto the top of the stove being very careful to center the pot on top of the stove. Check the centering from the front and from the side. If the pot is NOT centered and stable it will topple over. This could ruin dinner and possibly overturn the stove spilling alcohol and causing a fire.

Wind screen: Now arrange the windscreen around the pot and stove leaving about .5" to .75" between the edge of the windscreen and the edge of the pot. If needed the windscreen can be trimmed to fit a smaller pot. Leave the two ends of the windscreen about .5" apart. This will accommodate pot handles and allow oxygen to get to the stove. It will also allow you to blow out the stove if necessary.

ALWAYS use a windscreen. It blocks the wind but it also reflects some heat back to the stove keeping it hot which vaporizes the alcohol for better performance.



Center stove on heat reflector



Fully primed stove

WARNING: This stove ONLY works on alcohol. DO NOT under any circumstances use gasoline, white gas, Coleman fuel or any petroleum based fuel. Doing so could cause an explosion and severe burns. Alcohol is very flammable so do not allow a child to operate without adult supervision. NEVER use this stove inside a tent. Only use with proper ventilation.

ULTRALIGHT
DESIGNS™

www.ultralightdesigns.com — For all of your Ultralight Backpacking needs